

F1 SITE PLAN  
1" = 10'-0"

SITE LIGHTING NOTES:

ALL LIGHTING TO BE PROVIDED AS SPECIFIED THROUGH DBI ESTABLISHED NATIONAL ACCOUNTS PROGRAM WITH VILLA LIGHTING SUPPLY OR NEEDHAM ELECTRIC. PLEASE CONTACT:

- VILLA LIGHTING NATIONAL ACCOUNTS DEPARTMENT  
P: 1-800-325-0963 x462  
F: 314-531-8720
- NEEDHAM ELECTRIC NATIONAL ACCOUNTS DEPARTMENT  
P: 1-200-244-6980  
F: 781-575-1398

PRICING HAS BEEN PRE-NEGOTIATED AND PRODUCT IS AVAILABLE TO SHIP AS NEEDED.

1) REFER TO ARCHITECTURAL EXTERIOR ELEVATIONS FOR FIXTURE MOUNTING HEIGHTS ON BLDG.

2) THE ELECTRICAL CONTRACTOR SHALL BE RESPONSIBLE FOR RECEIVING, STORAGE, INSTALLATION AND WIRING OF LIGHT FIXTURES.

3) REFLECTANCE VALUES OF 80-50-20; LIGHT LEVEL CALCULATED AT 2.5'

4) FIXTURES MOUNTED ON 25' POLE & 3' BASE LIGHT LEVEL CALCULATED ON THE GROUND

FIXTURES SHALL BE HOUSE SIDE SHIELD 2-LAMP LED FIXTURES WITH TYPE 3 OR TYPE 4 DISTRIBUTION HEAVY-DUTY, SINGLE-PIECE DIE-CAST ALUMINUM HOUSING - DIE-CAST ALUMINUM DOOR WITH ONE-PIECE SILICONE GASKET.

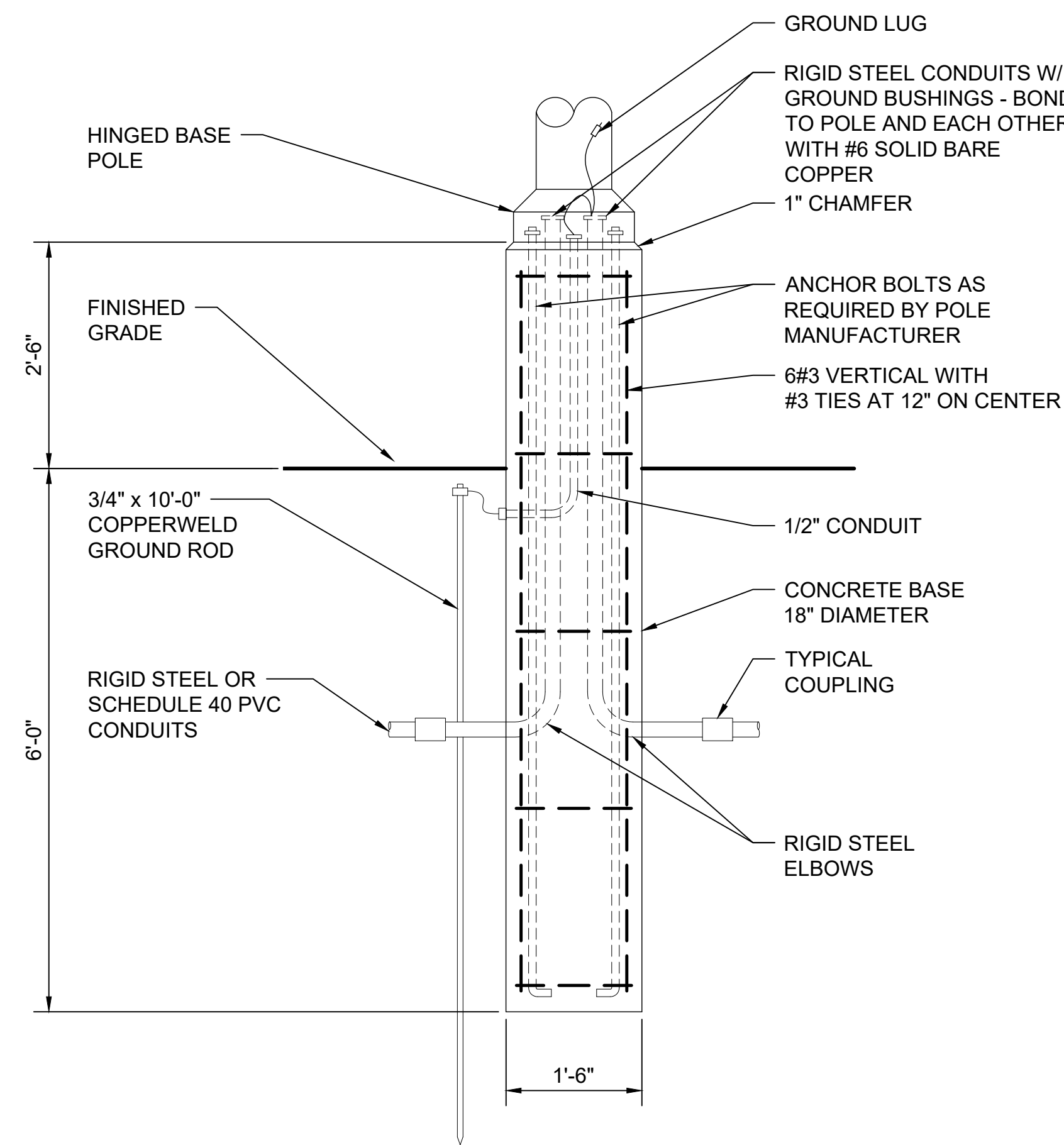
POLES ARE TO SQUARE STEEL AND MOUNTED AT 20' OR 25' IN HEIGHT. THE POLE SHALL BE FURNISHED WITH (4) GALVANIZED ANCHOR BOLTS, NUTS & WASHERS, METAL TEMPLATE, HAND HOLE AND BASE COVER. VERIFY DIMENSIONS CONFORM TO ALL LOCAL CODE REQUIREMENTS AND RESTRICTIONS BEFORE PLACING ORDER.

UTILIZING POLE AND BUILDING LIGHTING, OVERALL MINIMUM SITE LIGHTING SHOULD BE 3-5 FOOTCANDLES. CIRCULATION AREAS, SIDEWALKS, DRIVE-THRU LANES AND LANDSCAPING SHOULD BE HIGHLIGHTED. SHARP CUT-OFFS (IDEALLY 1/2 F.C.) AT THE PROPERTY LINES NEED TO BE MAINTAINED.

THE DRIVE-THRU LANES SHOULD MAINTAIN 3-5 FOOTCANDLES THROUGHOUT WITH A MAXIMUM OF .5 FC AT THE BACK PROPERTY LINE. WALL PACKS SHALL BE 175W MH FULL CUT-OFF WITH SEGMENTED OPTICS; SOLID FRONT AND MEDIUM THROW LIGHT DISTRIBUTION. THESE SHOULD BE MOUNTED ON THE BUILDING @ 12' TO 15' ABOVE GRADE.

KEYED NOTES:

- 4" WIDE WHITE PAINTED STRIPING.
- DUMPSTER ENCLOSURE. SEE DETAIL F1 SHEET AS1.05. PROVIDE BOTH HOT AND COLD WATER AND A DRAIN.
- DIGITAL PREVIEW BOARD, SEE DETAIL F3 SHEET AS1.04.
- ORDER CANOPY, SEE DETAIL C1 SHEET AS1.05.
- DIGITAL MENU BOARD, SEE DETAIL F5 SHEET AS1.04.
- PAINTED WHITE TRAFFIC DIRECTIONAL ARROWS TO BE PAINTED [TP-01] WHITE.
- DUAL LANE CLEARANCE BAR, SEE DETAIL D1 SHEET AS1.04.
- BOLLARD, SEE DETAIL F1 SHEET AS1.04.
- PRECAST CONCRETE WHEEL STOPS.
- HANDICAPPED PARKING SIGN.
- DOUBLE ARROW GRAPHIC (SEE NATIONAL ACCOUNTS, PAINT [TP-01] WHITE.
- PYLON SIGN. VERIFY SIZE AND LOCATION WITH "INSPIRE BRANDS". SEE DETAIL C4 SHEET AS1.04.
- REMOVE SECTION OF SECTION EXISTING CONCRETE CULVERT TO CREATE AN OPEN DRAINAGE SWALE.
- PROVIDE NEW 20"Ø CONCRETE CULVERT UNDER NEW DRIVEWAY.
- FEED BUILDINGS UNDERGROUND FROM THIS POWER POLE.
- AREA LIGHTING FIXTURE, COMPLETE WITH EXTRUDED ALUMINUM HOUSING, HOUSIDE SHIELDS, ELECTRONIC DRIVER INTEGRAL HEATSINK, 30' ROUND STEEL POLE AND MOUNTING ACCESSORIES AS REQUIRED. LUMINAIRES SHALL BE UL LISTED FOR WET LOCATIONS. EQUAL TO LITHONIA DSX2LEDP340KT3MHSMVOLT, LAMPS SHALL BE LED 28,273 LUMENS.
- PAD MOUNT TRANSFORMER, VERIFY LOCATION.
- "SEE YOU SOON"/"EXIT" DIRECTIONAL SIGN. SEE DETAIL D4/AS1.04.
- "WELCOME BACK"/"ENTER" DIRECTIONAL SIGN. SEE DETAIL D4/AS1.04.
- "DO NOT ENTER" DIRECTIONAL SIGN. SEE DETAIL D4/AS1.04.
- DRIVE THRU BRANDED GRAPHIC (SEE NATIONAL ACCOUNTS) PAINT [TP-01] WHITE.
- 6" LINE STRIPING PAINT [TP-04] ORANGE.
- ORDER LANE SPEAKER CONFIRMATION LOOP.
- ORDER LANE MERGE LOOPS.
- CURBSIDE BRANDED GRAPHIC (SEE NATIONAL ACCOUNTS) PAINT [TP-01] WHITE.



F4 DETAIL - LIGHT STANDARD BASE  
NOT TO SCALE

PROJECT NO: 26010  
DRAWN: DJH  
CHECKED: WAT  
DATE: APRIL 2026  
LAST REV: 5-12-26

AS1.02

© 2026, Alliance Design Group, LLC all rights reserved.

1439 Centre Ct., Ste 401  
Alexandria, LA 71301  
Ph: 318.445.3151  
F: 318.445.3988  
Em: adg@adgllc.net

1111 MacArthur Drive  
Alexandria, Louisiana 71301